



Configuration of your CadMouse

Contents

Configuration of your CadMouse.....	1
Setting up your CadMouse	2
1. Connecting	2
2. Download the latest software package.....	2
3. Software installation	2
4. Pairing (wireless only)	2
5. Getting started	3
3Dconnexion Properties	4
Configure your CadMouse	4
Speed	4
Advanced Settings	5
Buttons	6
Creating Macros	7
Assigning "Quick Macros" to buttons	7
Assigning Commands using the flyout window	7
Using the Live Search field	8
Creating Radial Menus.....	8
CadMouse Application Specific Commands	9
CadMouse Specific Functions.....	9

Find out how to customize your CadMouse to suit your needs. From basic settings through to advanced button customization, macros and radial menus, you'll soon be enjoying new levels of speed, comfort and performance!

Setting up your CadMouse

1. Connecting

Make sure the CadMouse is connected to a USB port of your PC (for CadMouse Wireless, please connect the supplied universal receiver dongle to a USB port) before starting the installation process.



2. Download the latest software package

Make sure you have the latest 3Dconnexion software installed. The latest version can be downloaded at 3dconnexion.com/drivers.

3. Software installation

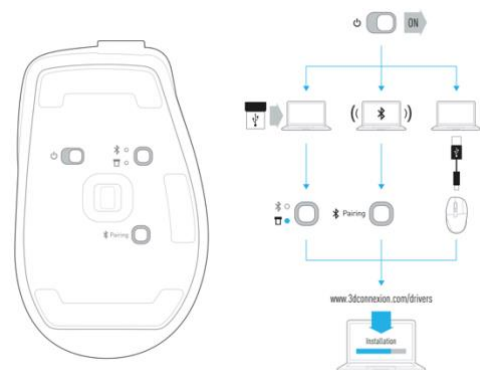
Launch the downloaded software package and follow the on-screen instructions.

4. Pairing (wireless only)

After installing the latest 3Dconnexion software package, open the 3Dconnexion folder on your PC and run the "3Dconnexion Pairing tool". Next, click the "Add Device" or "+" button and choose your device (alternatively, you can access this menu via 3Dconnexion Home > Settings).

Connect CadMouse - Turn on the device via the power switch located on the bottom of the CadMouse Wireless. Next, press the mode switch button (also located on the bottom of the device) and select USB mode by making sure the blue light is active next to the USB icon. You will receive an on-screen prompt in the 3Dconnexion Pairing Tool to adjust your device. Once you do so, the device will be paired automatically.

*Connect CadMouse (Bluetooth) - To pair via Bluetooth, first turn on the power switch located on the bottom of the device. Next, make sure Bluetooth is active on your PC and in discover mode. Then, press the mode switch button (also located on the bottom of the device) making sure the blue light is active next to the Bluetooth icon and press the "Pairing" button. Your device should be discoverable on your workstation now. Choose your device from the list and it will pair to your PC.



5. Getting started

Like any new tool, there is a little bit of a learning curve - but most users tell us that within a short period of time, they stopped thinking about the CadMouse and began to intuitively navigate their 2D/3D content in a way they could never do before. To get you there as quickly as possible, we have included some helpful tools which are available via the 3Dconnexion home icon on your Desktop:



3Dconnexion Home - training applications:

Available from 3Dconnexion Home, some fun demo applications are available to provide extra assistance in learning how to use the CadMouse in tandem with the SpaceMouse. These include applications such as a Trainer, the 3D Puzzle game and the 3Dconnexion Viewer. 3Dconnexion Home offers also direct access to the 3Dconnexion product's Manual and the Registration web page.

3Dconnexion Properties:

This is where you can customize settings for your CadMouse, including Speed, Button Mapping and a lot more.

3Dconnexion manual:

This help file, which provides general help in working with the properties panel settings and CadMouse usage.

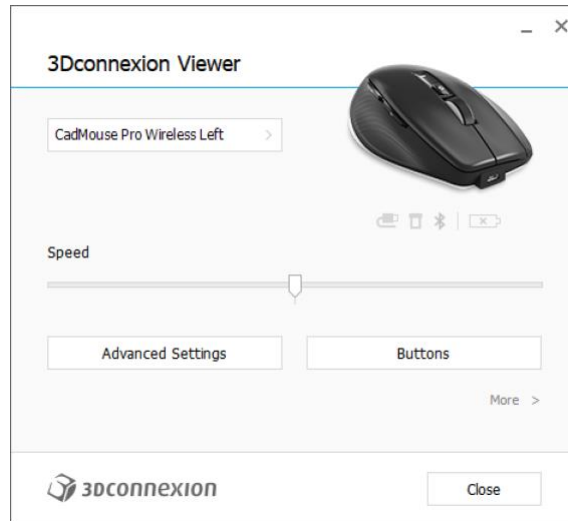
Website:

Our website, 3dconnexion.com/drivers, also provides additional information on our 2D Mice and answers to frequently asked questions.

3Dconnexion Properties

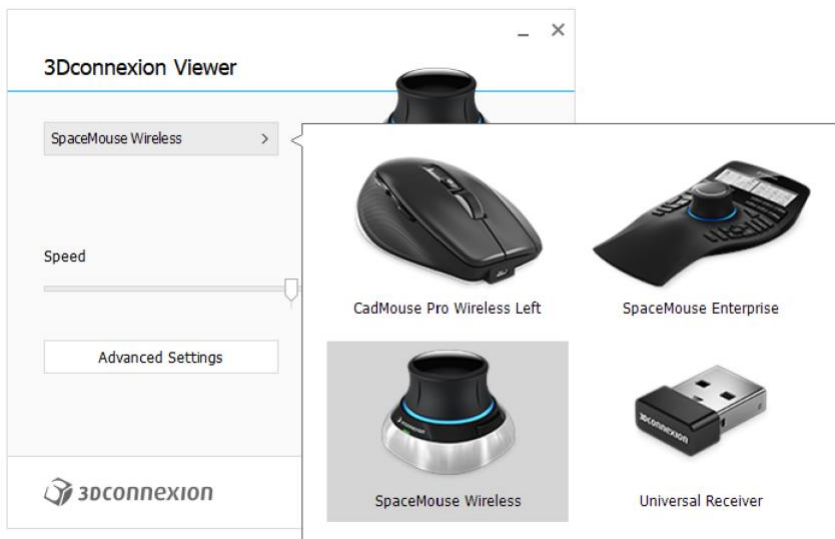
You can access the 3Dconnexion Properties panel via the icon in your notification area (systray), 3D Mouse Home (on your desktop) or by selecting properties from the radial menu (by default this is launched by pressing the Radial Menu Button on the top of the CadMouse).

At the top of the panel you see the active application. Any changes you make to CadMouse settings are relevant to this application only.



Configure your CadMouse

If you have multiple 3Dconnexion devices connected, you can select the one you want to configure by clicking on the flyout button at the top left of the panel and then selecting the relevant device.



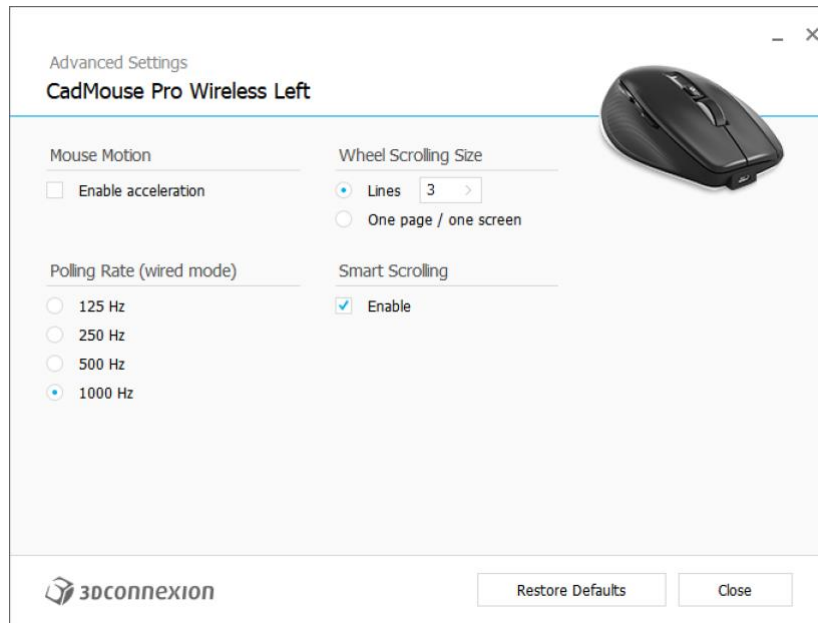
Speed

This slider sets the overall speed for your CadMouse.

Note: The CadMouse speed slider sets speed globally for all applications.

Advanced Settings

The “Advanced Settings” panel allows you to configure CadMouse settings.



Mouse Motion

Enable Acceleration: If the mouse is moved faster, the cursor will move further across the screen.

Enable lift-off detection: If the mouse is lifted off the mouse pad the cursor will not move.

Polling Rate

Select the frequency at which the CadMouse laser sensor operates when connected by cable. A higher frequency results in more accurate tracking and smoother movement of the cursor.

Wheel Scrolling Size

Lines: Select the number of lines scrolled when the mouse wheel is moved 1 increment.

One page / one screen: Moving the mouse wheel 1 increment will scroll to the next/previous page.

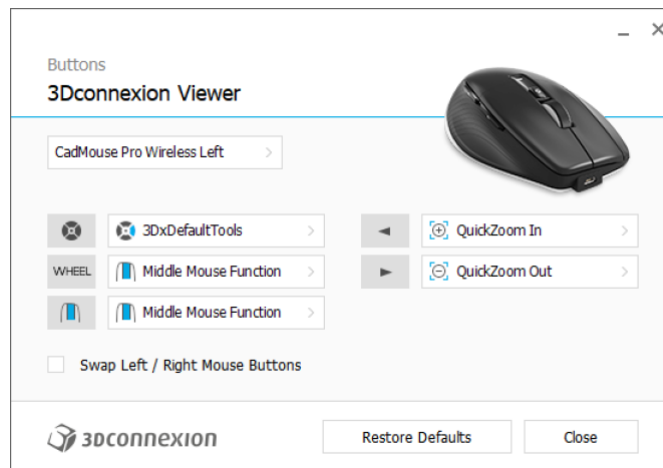
Smart Scrolling

If the mouse wheel is scrolled rapidly the screen will keep scrolling until the mouse wheel is moved in the opposite direction 1 increment.

This is useful for scrolling through long pages of text in documents and browsers.

Buttons

The Buttons panel within 3Dconnexion Properties allows you to assign commands, Macros or Radial Menus to the CadMouse buttons.



A note about Environment sensitivity

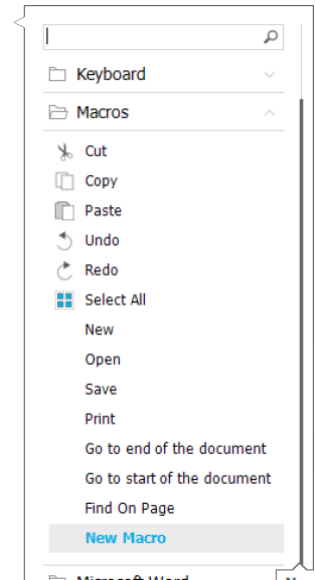
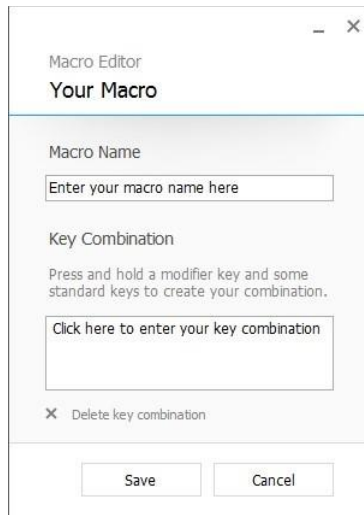
Some applications feature environment sensitive button mapping.

In those applications you can have different button assignments depending on the current active environment.

Creating Macros

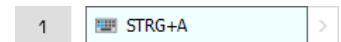
To create a new Macro, expand the "Macro" category and click on "New Macro".

This opens the Macro Editor where you can assign a name for your Macro and a sequence of keystrokes in the corresponding fields. Clicking on "Save" will automatically assign the new Macro to the button from where you opened the panel.

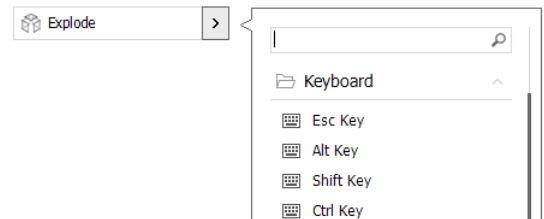


Assigning "Quick Macros" to buttons

To quickly assign a keystroke or macro to a button, simply click on the text in the button field and press the required key or key combination.



When a macro is created, it always sends a "press and release" command. If you want to assign a "press and hold" command instead (for example Ctrl or Shift), you should use the "Keyboard" command category in the flyout window (not the "Quick Macro" function described above).

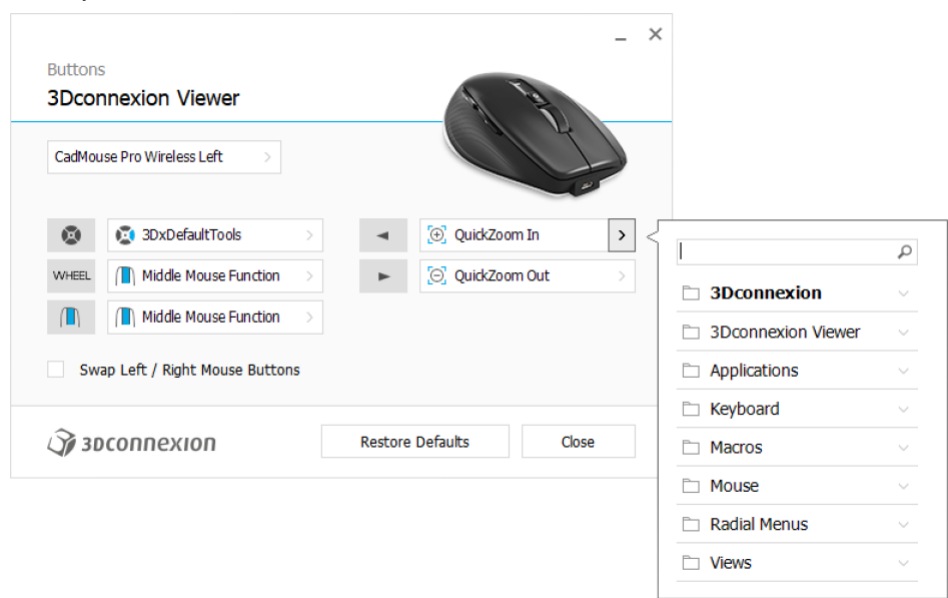


Assigning Commands using the flyout window

Clicking on the ">" arrow on the right hand side of the button field opens a flyout window for that CadMouse button:

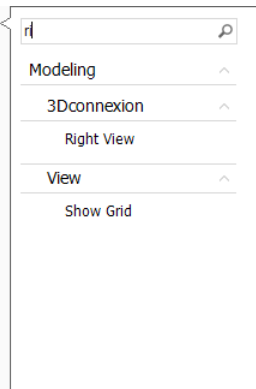
The category of the command that is currently assigned to that button is highlighted in bold.

The flyout window allows you to browse or search for commands in different categories such as 3Dconnexion or application commands. When you select a command by clicking on it, it is automatically assigned to the CadMouse button.



Using the Live Search field

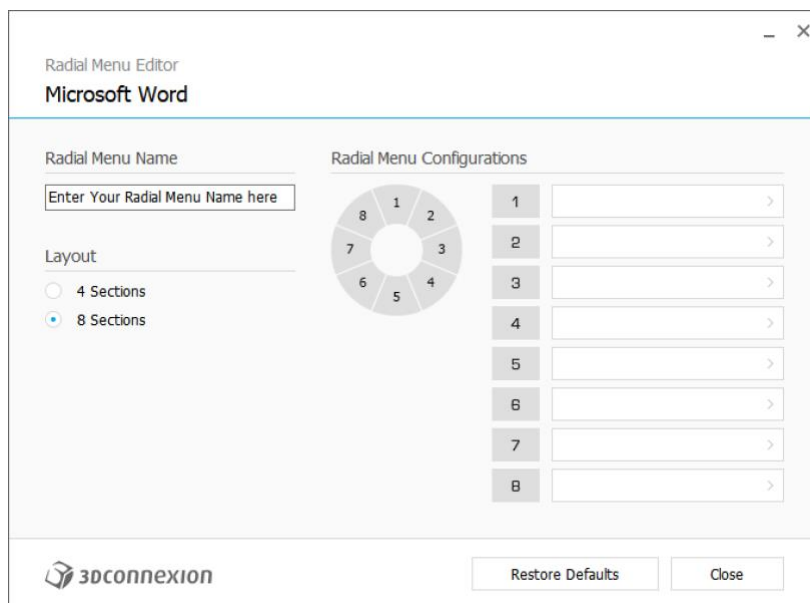
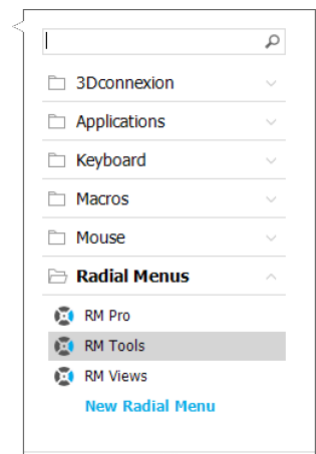
You can search for specific commands by typing text into the Live Search field. Only commands (and their parent categories) which contain the text sequence you enter are shown in the flyout window.



Creating Radial Menus

To create a new Radial Menu, expand the "Radial Menu" category and click on "New Radial Menu".

This brings up the Radial Menu Editor where you can assign a name and commands to the different sections. Your new Radial Menu will be automatically assigned to the button from where you opened the panel.



CadMouse Application Specific Commands

QuickZoom

QuickZoomIn: Zooms in on the object and centering around the cursor's location when the command is executed.

QuickZoomOut: Zooms out the view.

These commands are mapped to the thumb buttons on your CadMouse by default but can be mapped elsewhere via the buttons menu in the 3DConnexion properties panel.

The following applications have the QuickZoom feature available:

3ds Max
AutoCAD
AutoCAD Architecture
AutoCAD Civil 3D
AutoCAD Mechanical
AutoCAD MEP
AutoCAD Plant 3D
Blender
BricsCAD
CATIA V5
CATIA V6
Chief Architect
Cinema 4D
Creo Parametric
CreoView
DWOS Chairside
DWOS Client
DWOS Easy Mode
Fusion 360
GO2cam
Google Earth (Desktop version)
Houdini
Inventor
Maya
Mecway
Metrosoft QUARTIS
NX
Onshape
Revit
SCENE
SketchUp Pro
Solid Edge
SolidCAM
SOLIDWORKS
Tebis CAD/CAM
Vectorworks
VISI-Series